



HIGH PRESSURE WELDED END BALL VALVES HTV SERIES 1500# Through 4500#



The Jarecki HTV Series are severe service ball valves. This Series was specifically designed to handle high temperatures and pressures. These valves provide the tightest shutoff for the longest period of time in very severe applications. The HTV is engineered and built to withstand temperature fluctuations and pressure surges better than any other valve on the market.

Tight Shut-Off

- The HTV Series provides zero leakage. Each ball is spherically ground before it is mated to the seats, providing a high precision seal. A wide seating surface provides more seal area and lower contact stress. The lower contact stress reduces torque and improves valve sealing life. Lower torques and better shut-off.

Lower Torque

- Wide seating area reduces contact stress. This reduces the torque and improves valve life.
- A wave spring is used to load the upstream seat. This spring type is a superior choice in maintaining spring force during temperature fluctuations.

Quality Control

- On every valve, both a hydrostatic test and a leak test are performed.

Impressive Stem Design

- Our stems will withstand high torque in rough applications without shearing.
- Blow-Out proof design insures workman safety

Zero Body Leakage

- Valve is a one piece body design. There are **no** body gaskets which can produce a possible leak path.

Packing Design

- Live loaded packing system specially designed for high pressure applications
- Bearing guided coupler prevents any lateral movement when stroking.
- Plenty of adjustment.
- Packing set consists of two high density sealing rings and two Inconel reinforced end rings to prevent extrusion.

THE HTV SERIES ADVANTAGE



Zero leakage available on metal seated valves now combines high performance and durability with effective sealing. This is accomplished by spherically grinding every ball to very tight tolerances, then generating the ball radius on the seat. The ball and seat set are then mated together to meet the leakage requirements of the customer.



Jarecki Valves typically use a floating ball design. This allows the ball to move with the flow media against the downstream seat. The result is effective sealing at high and low pressures.



Our standard grafoil packing system is a four ring system, consisting of two reinforced grafoil retaining rings on the ends, and two pre-compressed grafoil sealing rings in the center. The packing gland is then loaded with belleville washers to keep compression on the packing during thermal changes.



An oversized stem using high strength alloys is used on every valve. Jarecki valves also designs the stem arrangement to be blow-out proof to ensure workmen safety.



Our oversized seats provide a valve with lower torque values and more effective sealing.



Bearing guided coupler eliminates stem lateral movement while the valve is being stroked. This increases the life of the valve stem packing.



Unique spring design provides constant seat to ball contact even during thermal cycles.

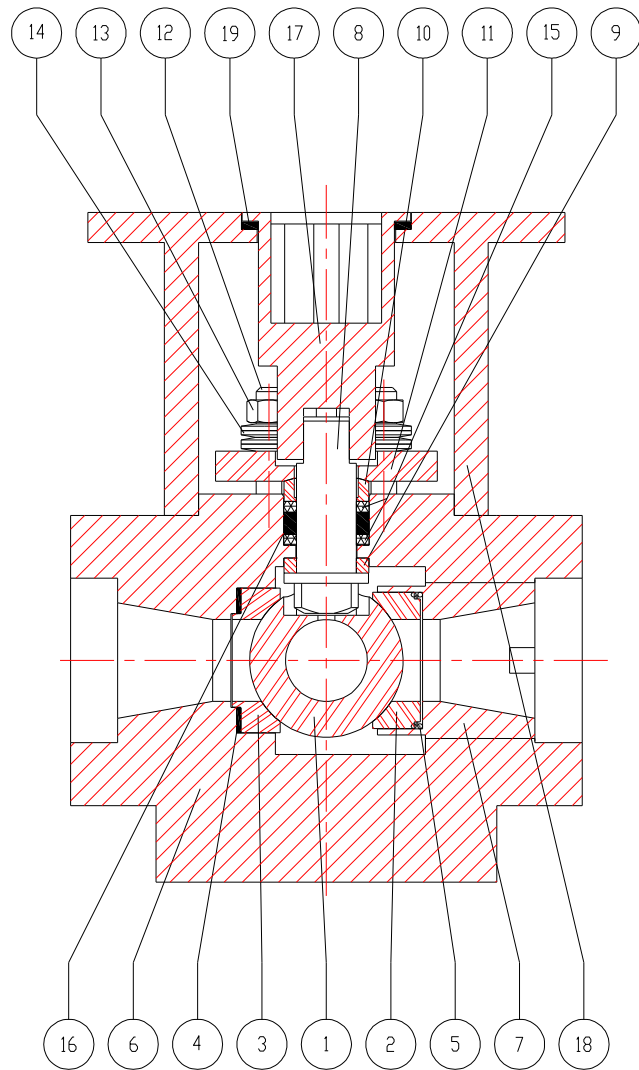
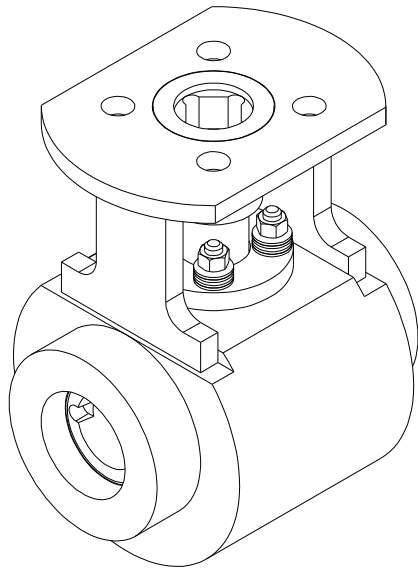


Every valve that leaves the plant has both a hydrostatic and seat leakage test performed on it. Also, any actuation which is mounted on the valve is tested at our facility as well. The customer is assured a good valve when it is put in service.

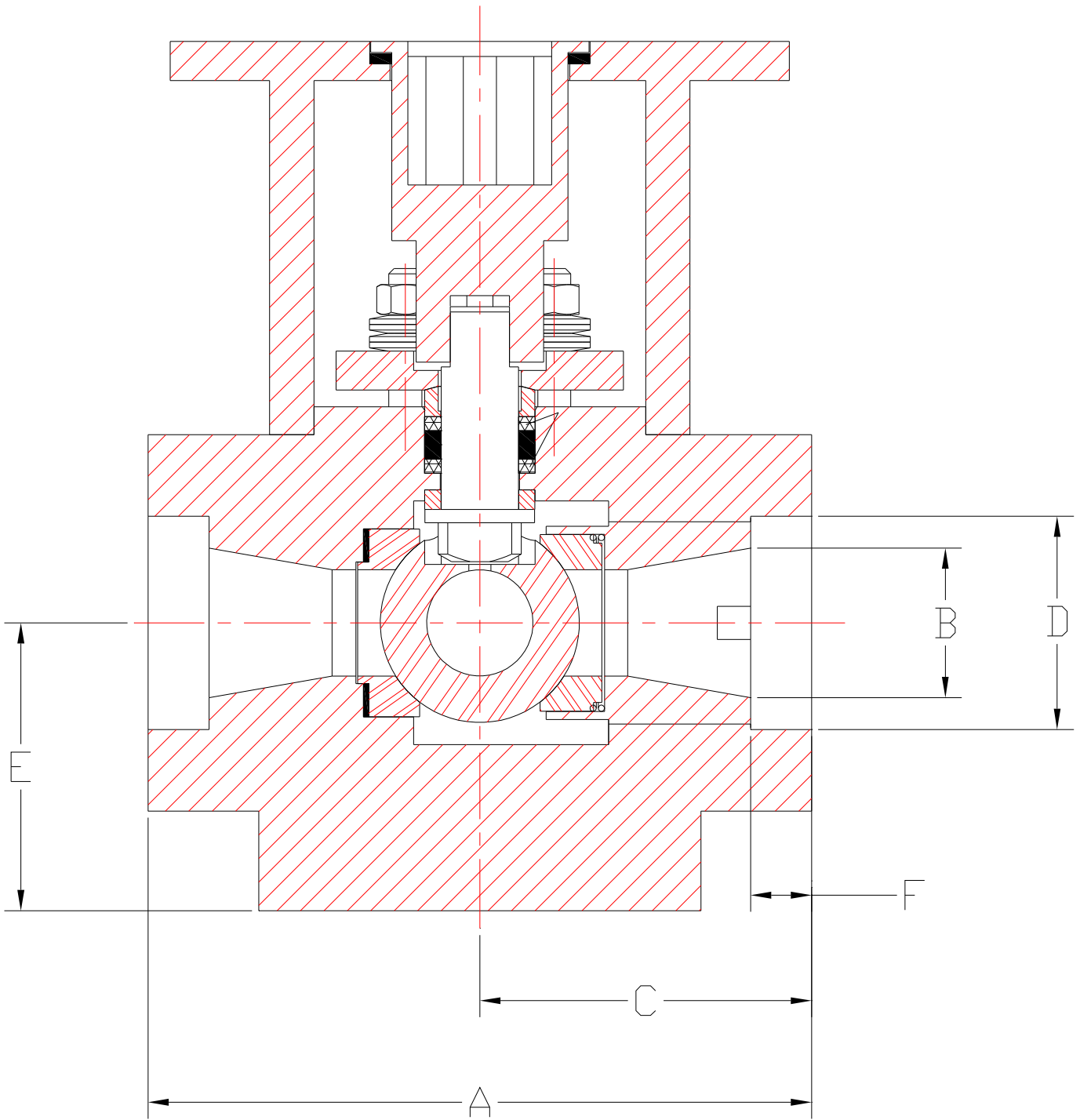
HTV SERIES

ANSI CLASS

1500# & 2500#



ITEM	QTY	DESCRIPTION	MATERIALS
1	1	Ball	316sst, 410sst, Inconel
1	1	Ball Coating	Hard Chrome Plate, Chrome Carbide, Boronizing, Colmonoy
2	1	Guide Seat	Stellite, Colmonoy, Boronizing, Chrome Carbide
3	1	Seal Seat	Stellite, Colmonoy, Boronizing, Chrome Carbide
4	1	Seat Seal	Reinforced Graphite
5	1	Spring	17-7 PH, A286, 718 Inconel
6	1	Body	A105, A182-F22, A182-F91
7	1	Reducer	A105, A182-F22, A182-F91
8	1	Stem	17-4 PH/ Chrome Plated, Inconel 718, A286
9	1	Thrust Washer	Stellite, Nitronic 60
10	1	Compression Ring	304 Stainless Steel
11	1	Compression Plate	Carbon Steel
12	4	Stud	A193 Gr B8
13	4	Std Hex Head Nut	Stainless Steel
14	16	Belleville Spring	301 Stainless Steel
15	2	Anti-Extrusion Ring	Inconel Reinforced Graphite End Rings
16	2	Stem Packing	High Density Die Formed Graphite Sealing Rings
17	1	Coupler	Carbon Steel
18	1	Mounting Bracket	Carbon Steel
19	1	External Thrust Washer	Carbon Steel, Chrome Plated, Nitronic 60
20	1	Hand Lever	Stainless Steel, Plastic Cover



Nom. Size	Series	A	B	C	D	E	F
3/4" S.W.	HTV	5.0	0.60	3.0	1.07	1.75	.44
1" S.W.	HTV	5.0	0.60	3.0	1.33	1.75	.50
1 1/2" S.W.	HTV	7.5	1.20	3.75	1.92	3.25	.62
2" S.W.	HTV	7.5	1.20	3.75	2.41	3.25	.69